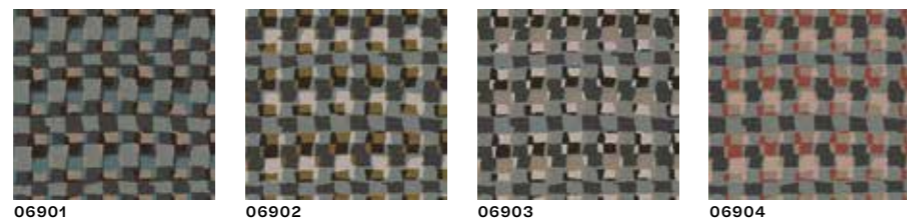


WP CUBE
(pattern 069)



40 pari

NON WOVEN VINYL
0,67 m x 10 m = 6,7 m²
(350 gr/m²)

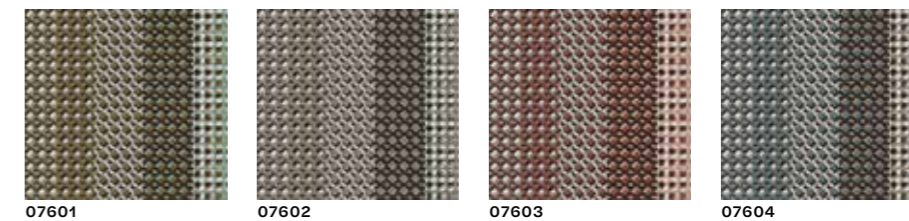


WP MARBLE
(pattern 076)

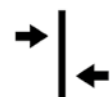


20 pari

NON WOVEN VINYL
0,67 m x 10 m = 6,7 m²
(350 gr/m²)

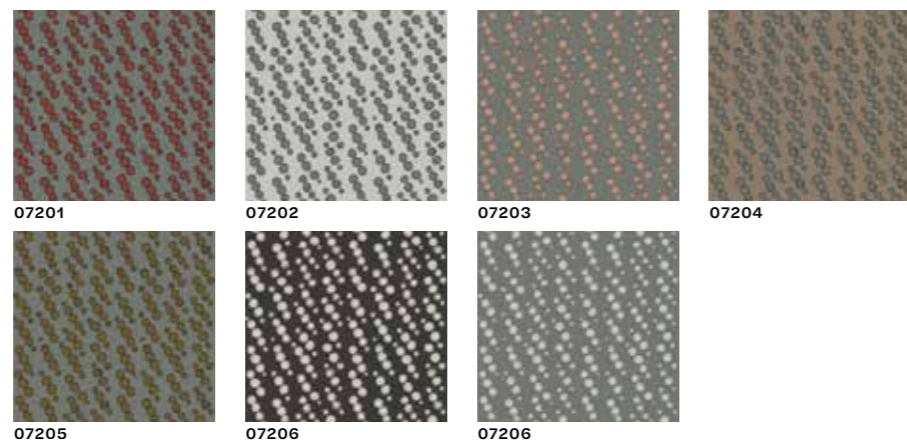


WP BOL
(pattern 072)



10,2 saltato

NON WOVEN VINYL
0,67 m x 10 m = 6,7 m²
(350 gr/m²)

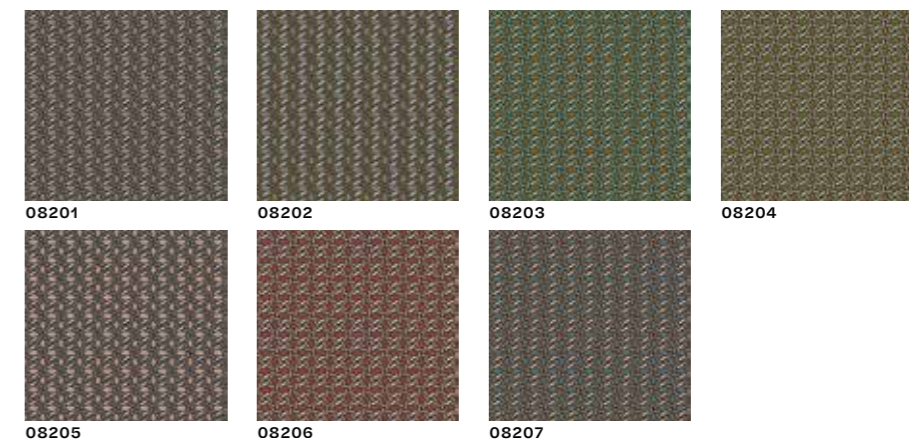


WP CHAINS
(pattern 082)



67 pari

NON WOVEN VINYL
0,67 m x 10 m = 6,7 m²
(350 gr/m²)

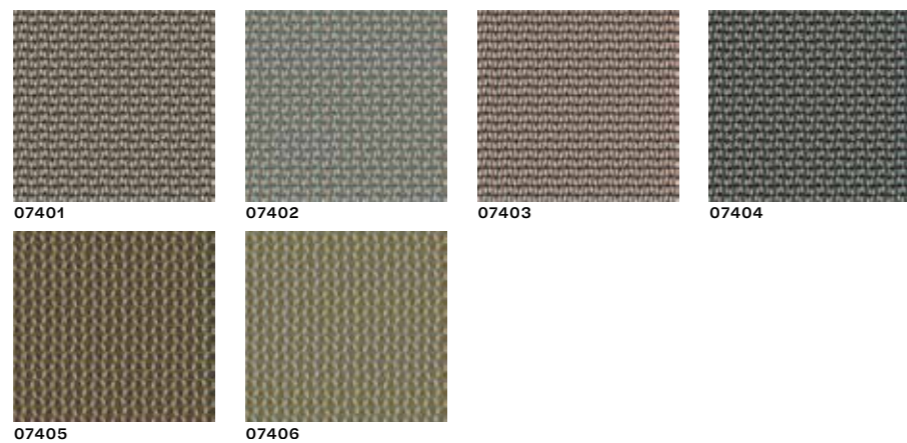


WPTWINS
(pattern 074)

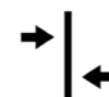


6 pari

NON WOVEN VINYL
0,67 m x 10 m = 6,7 m²
(350 gr/m²)



WP LEAF
(pattern 084)

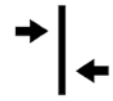


81/40,5
saltato

NON WOVEN VINYL
0,67 m x 10 m = 6,7 m²
(350 gr/m²)



WP FOG
(pattern 088)

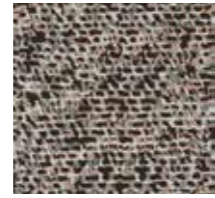


67/33,5
saltato

NON WOVEN VINYL
0,67 m x 10 m = 6,7 m²
(350 gr/m²)



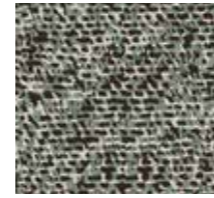
08801



08802

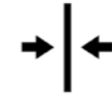


08803



08804

WP SKETCH
(pattern 117)



69 pari

NON WOVEN VINYL
0,67 m x 10 m = 6,7 m²
(350 gr/m²)



11701



11702

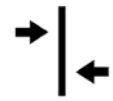


11703



11704

WPVIKY
(pattern 093)



71/35,5
saltato

NON WOVEN VINYL
0,67 m x 10 m = 6,7 m²
(350 gr/m²)



09301



09302



09303



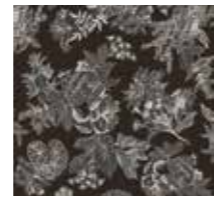
09304



09305

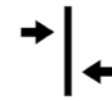


09306



09307

WP WILD
(pattern 127)



51/25,5
saltato

NON WOVEN VINYL
0,67 m x 10 m = 6,7 m²
(350 gr/m²)



12701



12702



12703



12704



12705

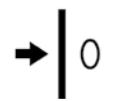


12706



12707

WPTEX
(pattern 111)



0

NON WOVEN VINYL
0,67 m x 10 m = 6,7 m²
(350 gr/m²)



11101



11102



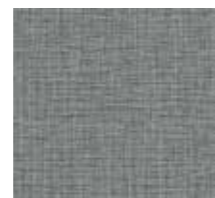
11103



11104

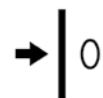


11105



11106

UNITI
PLAINS



0

NON WOVEN VINYL
0,53 m x 10 m = 5,3 m²
(350 gr/m²)

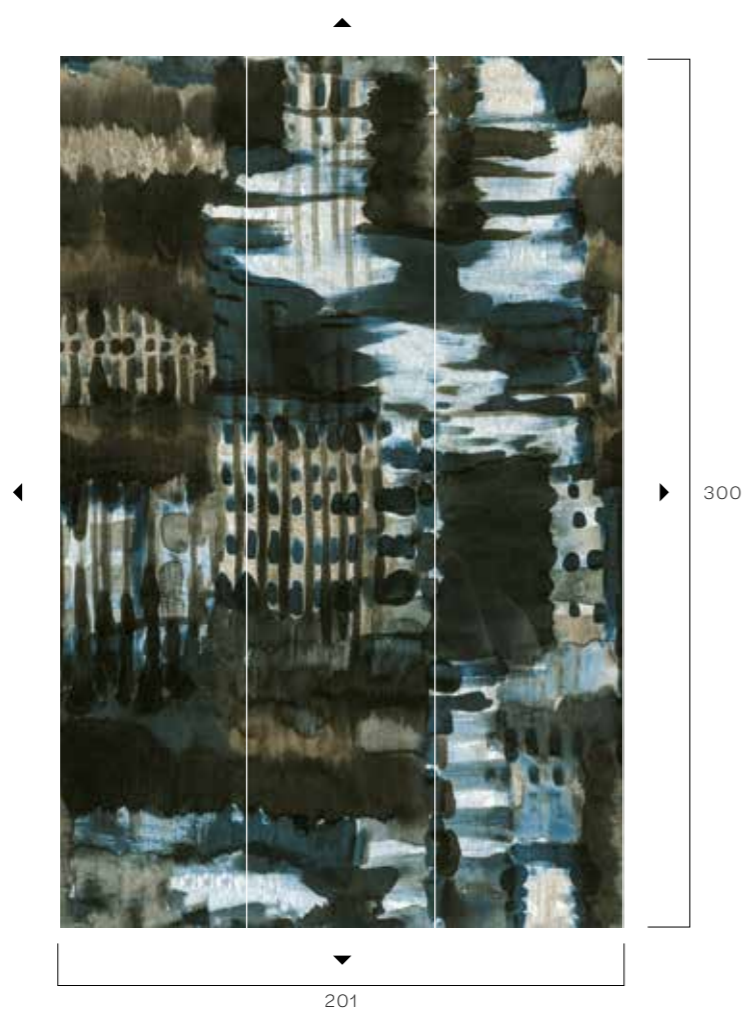
* NON WOVEN VINYL
0,7 m x 10 m = 7 m²
(380 gr/m²)



THE
MODULARS
IMODULARI

AFFRESCO

MODULO STANDARD / STANDARD MODULE
201x300H cm
(3 teli 67 cm cad. / 3 rolls 67 cm each)



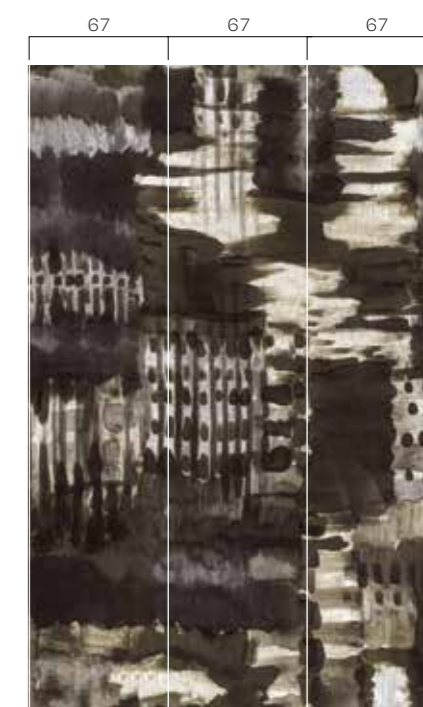
VARIANTI COLORE / COLOR VARIATIONS



LSW122EN01



LSW122EN02

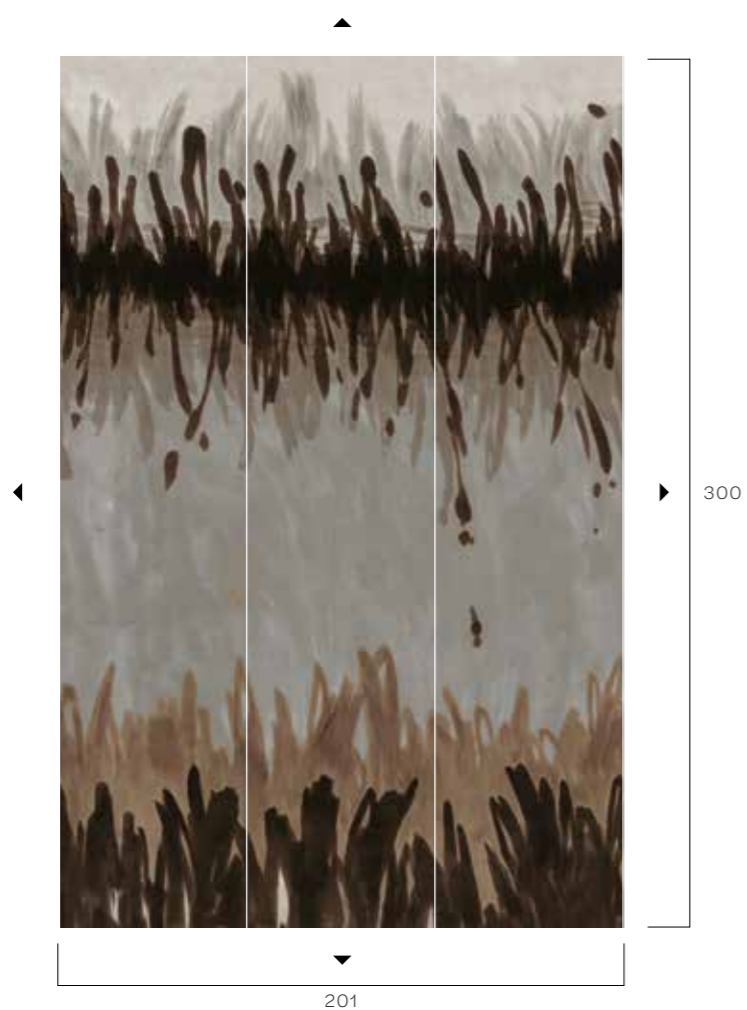


LSW122EN03

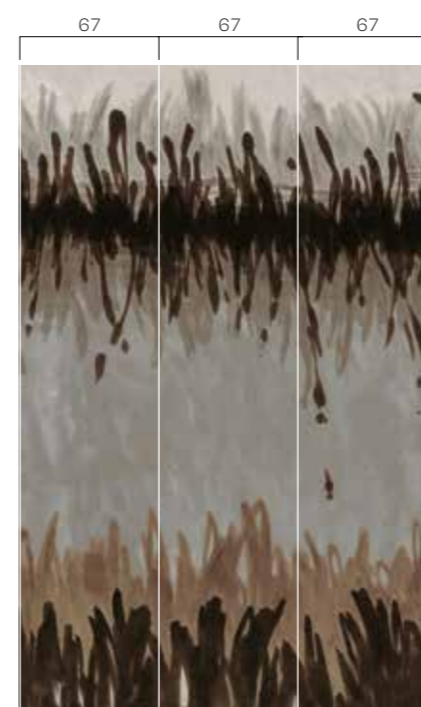
DISPONIBILI COME / AVAILABLE AS
configurazione standard / standard configuration
201x300 cm
su misura / custom

SCRIBBLE

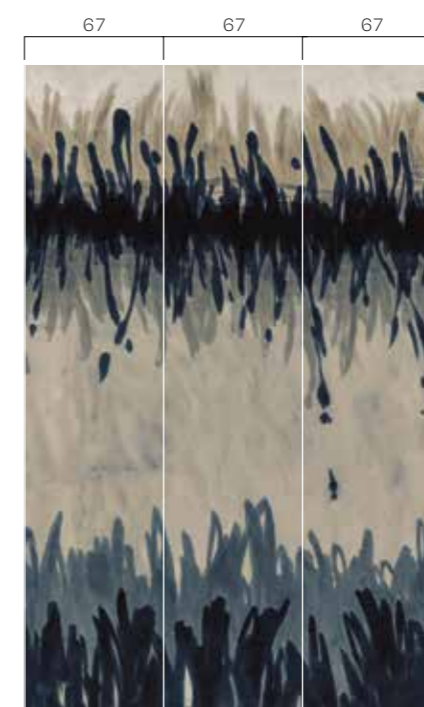
MODULO STANDARD / STANDARD MODULE
 201x300H cm
 (3 teli 67 cm cad. / 3 rolls 67 cm each)



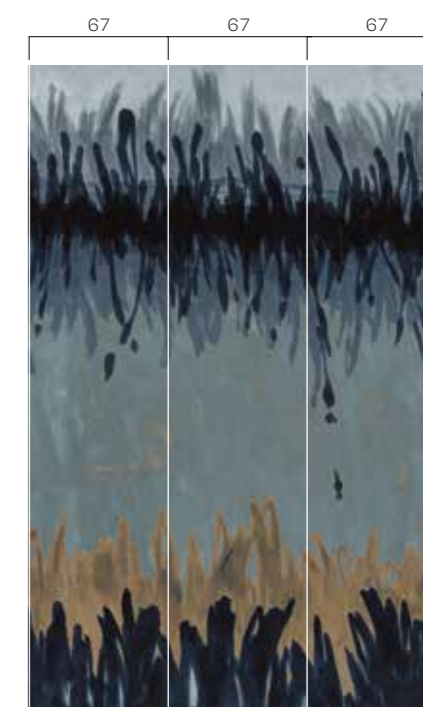
VARIANTI COLORE / COLOR VARIATIONS



LSW122PN01



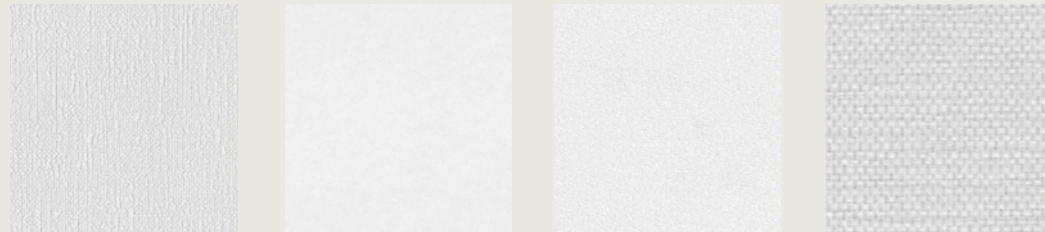
LSW122PN02



LSW122PN03

DISPONIBILI COME / AVAILABLE AS
 configurazione standard / standard configuration
 201x300 cm
 oppure / or
 su misura / custom

SUPPORTI / BACKINGS



Supporto <i>Backing</i>	TNT + vinile Non-Woven vinyl A10	TNT Non-Woven Q20	Tessuto Cotone Cotton Textile T 35	Fibra di Vetro Fiber Glass F70
Dimensione rotolo <i>Roll dimension</i>	0,67 X 10 m	0,67 x 10 m	1,4 x linear meter	0,94 x 10 m
Peso <i>Weight</i>	350 gr/m ²	147 gr/m ²	350 gr/m ²	220 gr/m ²



Limonta Spa - Divisione Wall
s.s.36, km 26 n.13
23846 Garbagnate Monastero (LC) Italy
EN 15102:2007+A1:2011 (19)

Chiedi i nostri prodotti certificati FSC®

Il marchio di qualità IGI garantisce alle carte da parati il rispetto delle norme di produzione e di qualità per la salvaguardia dell'ambiente. Le carte da parati che portano il marchio di qualità garantiscono:

- Assenza dimostrabile di cloruro di vinile monomero.
- Valori di formaldeide notevolmente inferiori a quanto previsto dalla normativa di legge.
- Assenza di metalli pesanti.
- Assenza di piombo e cadmio come sterilizzatori nelle carte viniliche.
- Assenza di clorofluorocarburi (CFC).
- Assenza di plastificanti di facile volatilità.

The IGI quality mark is a guarantee that the wallpaper is manufactured according to production and quality standards which are environmentally friendly.

Wallpapers carrying the quality mark guarantee:

- The provable absence of monomer vinyl chloride.
- A quantity of formaldehyde substantiates less than the quantities allowed by law.
- The absence of heavy metals.
- The absence of lead and cadmium as a stabiliser for vinyl wallcoverings.
- The absence of chlorofluorocarbon (CFC).
- The absence of easy volatile plasticizers.

PROPRIETÀ (TNT E VINILE) / FEATURES (NON-WOVEN AND VINYL)



Resistente alla luce
Light fastness



Lavabile e spazzolabile
Washable and scrubbable



Incollare il retro della carta
Paste the paper



Adesivo a parete
Paste the wall



Pelabile
Peelable



Strippabile
Stripable



Resistente al fuoco
Fire resistant



Senza rapporto
Free match



Rapporto pari
Straight match



Rapporto saltato
Offset match

IMPATTO AMBIENTALE / ENVIRONMENTAL IMPACT

In **Limonta** crediamo fortemente che sviluppare modelli di produzione più responsabili non sia solo una scelta necessaria, ma soprattutto un investimento sul domani. La certificazione FSC® ci permette di fornire prodotti in cui la totalità della materia prima, carta e TNT sia proveniente da foreste ben gestite e certificate, da materiali riciclati e da altre fonti controllate (Licenza FSC-C146657). Per diminuire l'impatto dei nostri prodotti sull'ambiente ci siamo impegnati ad utilizzare solo inchiostri a base acqua e quindi privi di solventi. Infine, ben consapevoli che ogni materiale ha un valore, collaboriamo da diversi anni con un'azienda leader nel settore nella commercializzazione di granuli da intaso per le superfici in erba sintetica che ritira gli scarti di lavorazione pre-consumo delle nostre carte da parati per trasformarli in granuli per i sistemi di drenaggio dei campi sportivi di tutto il mondo.

In **Limonta** we strongly believe that developing more responsible production models is not only a necessary choice, but above all an investment in tomorrow. The FSC® certification allows us to supply products in which all raw materials, paper and non-wovens come from well-managed and certified forests, from recycled materials and other controlled sources (License FSC-C146657). To reduce the impact of our products on the environment we are committed to using only water-based inks and therefore solvent free. Furthermore, well aware that every material has a value, we have been collaborating for several years with a leading company in the sector of infill granules for synthetic grass surfaces that collects the pre-consumer processing waste of our wall coverings to transform them into granules for draining system used for sports fields all over the world.

SOCIETY

— LIMONTA —

Concept e styling: beatricerossettistudio
Photo Shooting: Lorenzo Pennati

LIMONTA | WALL

S.S. 36 km 36 n°13
Garbagnate Monastero, Lecco, Italia
contact@limontawall.com
www.limontawall.com

WALLPAPER COLLECTION CHAPTER 1 è una collezione prodotta interamente in Italia da LIMONTA SPA, Divisione Limonta Wall. Tutti i prodotti, le immagini, i marchi e relativa proprietà intellettuale, nonché tutto il materiale marketing e di vendita, sono di proprietà di LIMONTA SPA. Non saranno accettati reclami per le lievi variazioni di colore che possono verificarsi tra i prodotti reali e le immagini degli stessi prodotti incluse in questo catalogo.

WALLPAPER COLLECTION CHAPTER 1 is a collection entirely manufactured in Italy by LIMONTA SPA, Limonta Wall Division. All products, images, trademarks and related Intellectual Property, as well as for all marketing and sales materials, belong to LIMONTA SPA. No claims will be accepted for the slight color variations that may occur between actual products and the images of the same products included in this catalog.